

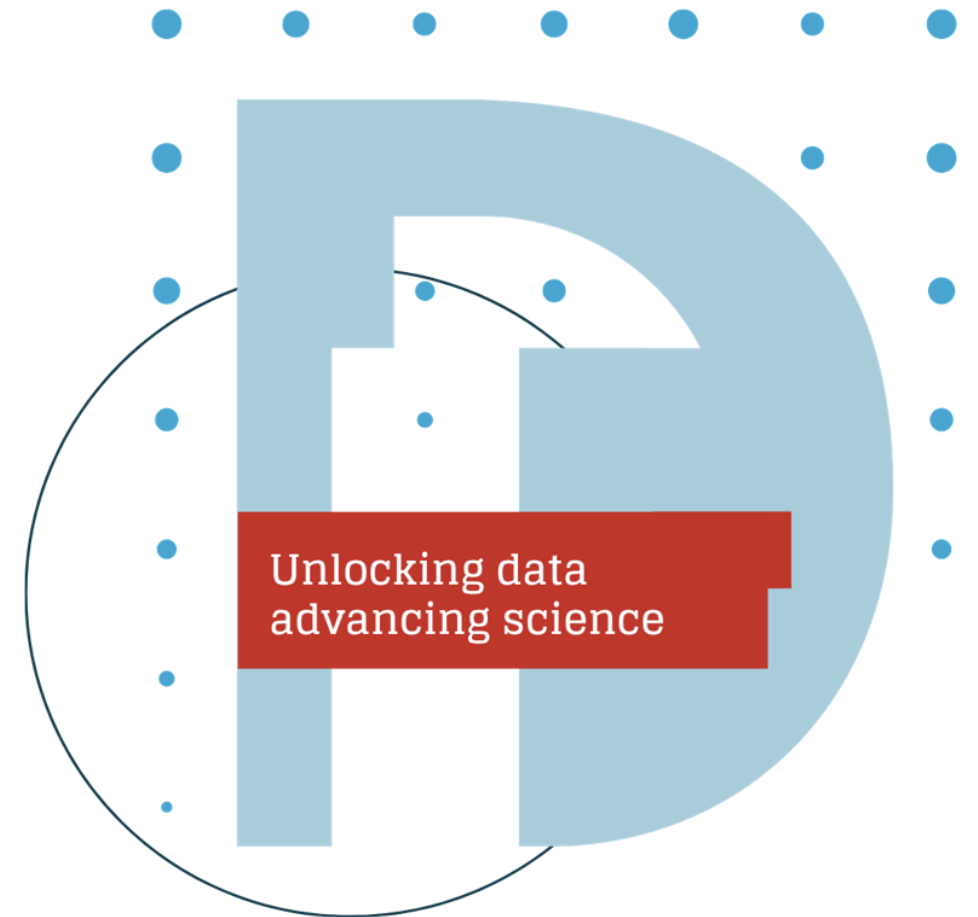
# Making your Data Policy FAIR

Marjan Grootveld | Lead Research Data Expert Team  
Maaïke Verburg | Research Data Management Specialist

11 June 2026



DANS Open Day  
Open data, open science



# Content



Our goal: you leave with an impression of the FAIR-enabling Data Policy Checklist.

- Brief introduction
- Use case: selection policy for the DANS data stations
- Apply the checklist to your own data policy
- Impressions and tips?



# FAIRsFAIR

Fostering Fair Data Practices in Europe

## FAIR-enabling Data Policy Checklist

The FAIRsFAIR landscape assessment<sup>1</sup> found that data policies that are clear and easy to understand can positively influence researchers in making their data FAIR. This checklist is based on FAIRsFAIR's policy enhancement recommendations<sup>2</sup> and will help users assess whether specific elements of their data policies are FAIR-enabling as well as providing recommendations for good practice.



[edu.nl/fcgqb](https://edu.nl/fcgqb)

Davidson, J., Grootveld, M., Verburg, M., van Horik, R., O'Connor, R., Engelhardt, C., Garbuglia, F., Vieira, A., Newbold, E., Proudman, V., & Horton, L. (2022). FAIR-enabling Data Policy Checklist (1.0). Zenodo. <https://doi.org/10.5281/zenodo.6225775>

# Checklist

| A                   | B  | C   | D  |
|---------------------|--|---|--|
| Policy element      | Good practice recommendation   | Tick the statement that best reflects your policy | Not applicable in this policy document, but can be found in: |
| Title of the policy | To support findability, policies should have a title that makes clear whose policy it is and what the policy relates to. | <input type="checkbox"/>                          |  |
|                     |  | <input type="checkbox"/>                          |  |
|                     |  | <input type="checkbox"/>                          |  |

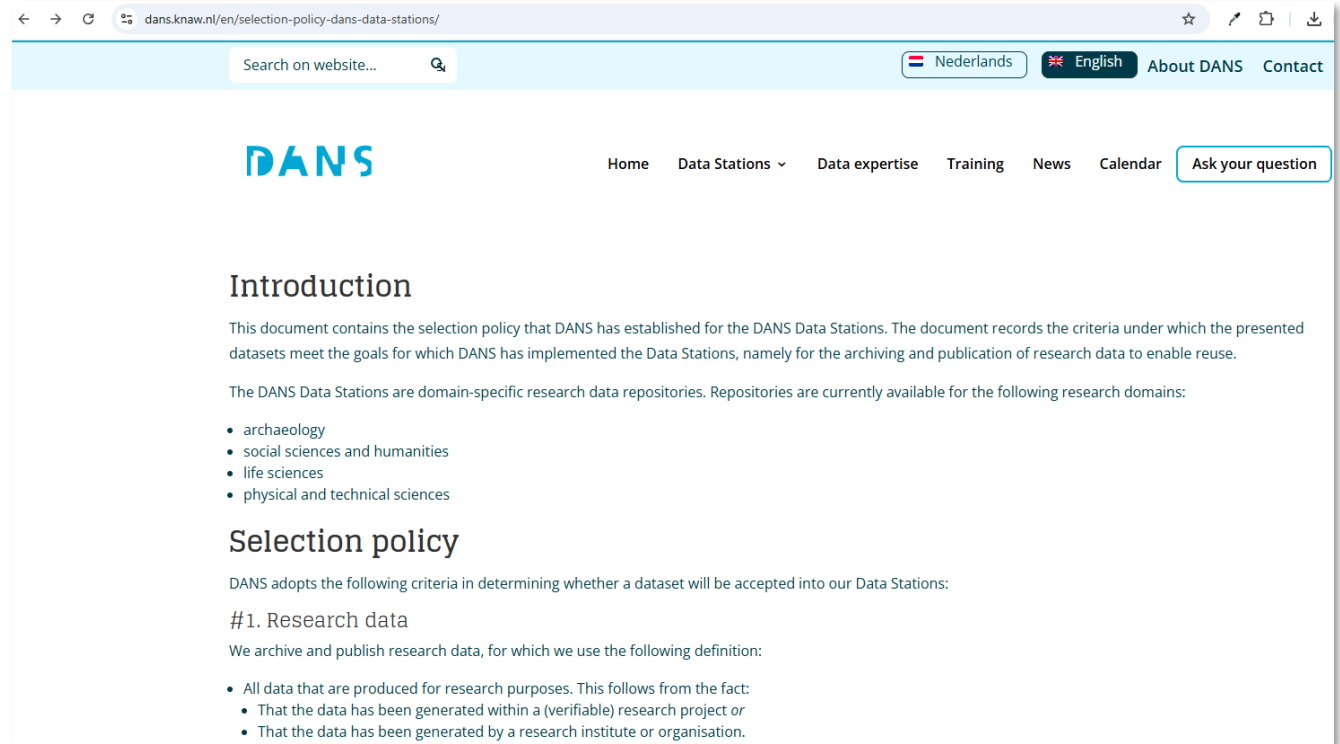
The checklist is broken into three sections each dealing with a different aspect of the policy. These include:

- **Context** of the policy such as the title and the year the policy came into effect
- **Content** of the policy focusing on suggested and required aspects of RDM and data sharing
- **Support** for adhering with the policy and **compliance** monitoring

Tip:  
if the example in column B is not applicable, ignore it and focus on column A.

# DANS Use Case

- Data Station Selection Policy
- Independent review by Marjan, Maaïke, and Data Station Manager Ricarda
- One consensus meeting resulting in a to-do list



The screenshot shows a web browser displaying the page [dans.knaw.nl/en/selection-policy-dans-data-stations/](https://dans.knaw.nl/en/selection-policy-dans-data-stations/). The page features a search bar, language selection (Nederlands, English), and navigation links (Home, Data Stations, Data expertise, Training, News, Calendar, Ask your question). The main content includes the DANS logo and the following text:

## Introduction

This document contains the selection policy that DANS has established for the DANS Data Stations. The document records the criteria under which the presented datasets meet the goals for which DANS has implemented the Data Stations, namely for the archiving and publication of research data to enable reuse.

The DANS Data Stations are domain-specific research data repositories. Repositories are currently available for the following research domains:

- archaeology
- social sciences and humanities
- life sciences
- physical and technical sciences

## Selection policy

DANS adopts the following criteria in determining whether a dataset will be accepted into our Data Stations:

### #1. Research data

We archive and publish research data, for which we use the following definition:

- All data that are produced for research purposes. This follows from the fact:
  - That the data has been generated within a (verifiable) research project or
  - That the data has been generated by a research institute or organisation.

# Feedback on our policy

- Title should be more informative
- Include clear versioning and commitment to reviewing and updating the policy
- Policy should get a persistent identifier
- Adding the policy to FAIRSharing
- Some small language updates for increased clarity
- Interlinking policies



# Selection Policy DANS Data Stations

The screenshot shows the FAIRsharing.org interface. At the top, there is a search bar and navigation tabs for STANDARDS, DATABASES, POLICIES, COLLECTIONS, ORGANISATIONS, ADD CONTENT, and STATS. A blue banner at the top indicates that the record is awaiting review by FAIRsharing curators. Below this, a table of metadata is displayed under the heading 'GENERAL INFORMATION'. The table includes fields for Type, Registry, Description, Homepage, and Year of Creation. The Description field contains a detailed paragraph about the selection policy and a link to the policy document. The Year of Creation is listed as 2024. On the right side of the record, there are several icons representing different aspects of the record, including a green 'R' icon, a gear, a person, and a speech bubble.

| Field            | Value   |
|------------------|---|
| Type             | DANS Data Station Selection Policy  |
| Registry         | Awaiting DOI  |
| Description      | Selection policy for the DANS Data Stations. The DANS Data Stations are domain-specific repositories hosted by DANS, the Dutch national centre of expertise and repository for research data. The selection policy records the criteria under which the presented datasets or other digital objects meet the goals for which DANS has implemented the Data Stations, namely for the archiving and publication of research data to enable reuse. It specifies the adopted criteria which DANS uses to determine whether a dataset or another digital object will be accepted into the Data Stations. The policy is available here: <a href="https://doi.org/10.34894/O2GOF9">https://doi.org/10.34894/O2GOF9</a> |
| Homepage         | <a href="https://dans.knaw.nl">https://dans.knaw.nl</a>   |
| Year of Creation | 2024  |

The selection policy was established in 2024 and reviewed in 2026. We aim to review it every two years to evaluate the policy and, if necessary, revise it.

## Dataset Citation

DANS, 2026, "Selectiebeleid DANS Data Stations", <https://doi.org/10.34894/O2GOF9>, DataverseNL, V1

[Cite Dataset](#) ▾

[Learn about Data Citation Standards.](#)

The selection policy is part of a set of policies for our Data Stations that users will need to comply with. Related policies include the [Data Stations Terms of Use](#) and the [Data Stations Policy](#).

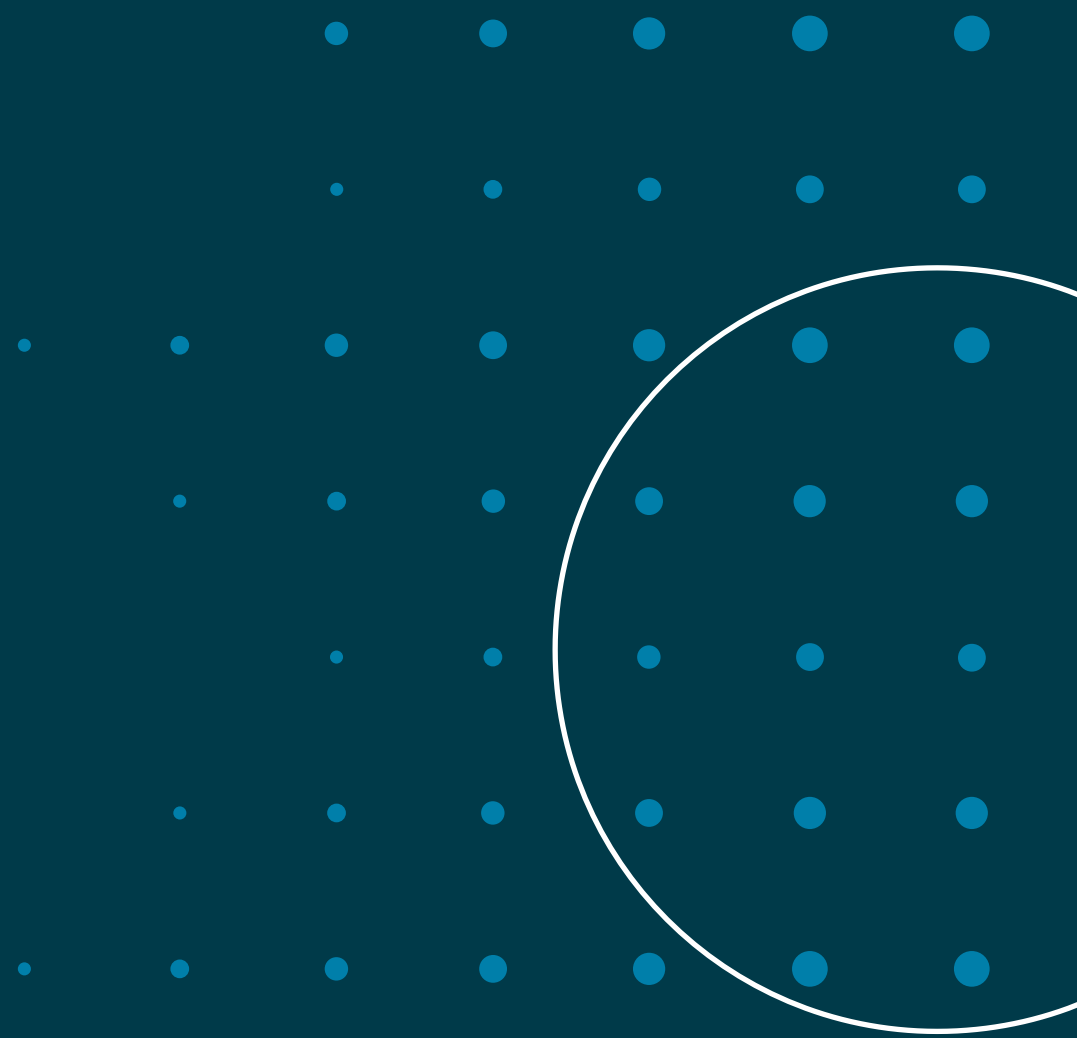
# Feedback on the checklist

- Clearly focused on RPOs and funders, some aspects not applicable for repositories
  - NB: A new version of this policy for repositories is in development by the FIDELIS project (successor of FAIRsFAIR)
- Not everything is always covered in one policy document.
  - Adding a column to indicate where the information is located.
  - This also can facilitate internal discussion of policy scope – should the information be in this policy or a different one?
  - Also provides a list of candidate policies to review next!

# Let's get to work!

- Who brought their own policy?
- Alternative: NWO RDM policy
  - Public national example to gain experience with the checklist
  - <https://www.nwo.nl/en/research-data-management>
- In groups, evaluate and discuss
  - Focus on the checklist: are instructions clear? Where can you find the right information? How do you score things?
  - Pick whichever parts you prefer to focus on
  - Discuss to reach consensus – where do your evaluations differ?

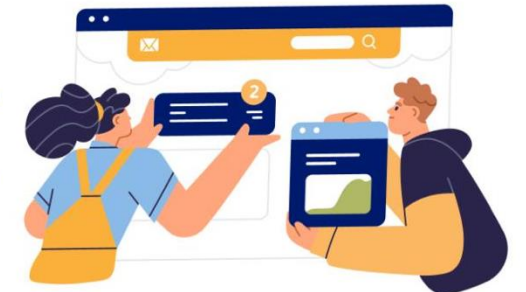
# Discussing your experiences



# Relevant links

- Davidson, J., Grootveld, M., Verburg, M., van Horik, R., O'Connor, R., Engelhardt, C., Garbuglia, F., Vieira, A., Newbold, E., Proudman, V., & Horton, L. (2022). FAIR-enabling Data Policy Checklist (1.0). Zenodo. <https://doi.org/10.5281/zenodo.6225775>
- Davidson, J., Grootveld, M., Whyte, A., Herterich, P., Engelhardt, C., Stoy, L., & Proudman, V. (2020). D3.3 Policy Enhancement Recommendations (1.0). Zenodo. <https://doi.org/10.5281/zenodo.5362183>
- Davidson, J., & Horton, L. (2022). Creating and Sharing Structured Policy Descriptions - a step by step guide (1.0). Zenodo. <https://doi.org/10.5281/zenodo.6281106>
- Davidson, J., Grootveld, M., van Horik, R., Verburg, M., Engelhardt, C., Garbuglia, F., Vieira, A., Newbold, E., Proudman, V., & Horton, L. (2022). FAIRsFAIR Structured Policy Description Template (1.0). Zenodo. <https://doi.org/10.5281/zenodo.6225938>
- DANS, 2026, "Selectiebeleid DANS Data Stations", <https://doi.org/10.34894/O2GOF9>, DataverseNL, V1

An updated version of checklist for repositories can be expected this summer (follow along with the [FIDELIS project](#))



# Thank you for your attention

DANS Open Day  
Open data, open science



**DANS**

Anna van Saksenlaan 51 | 2593 HW The Hague | The Netherlands | +31 (0)88 003 46 66  
National centre of expertise and repository for research data | An institute of the KNAW and NWO

✉ [DataLink](#)   [in LinkedIn](#)   [🦋 BlueSky](#)   [🐙 Mastodon](#)   [🌐 www.dans.knaw.nl](#)